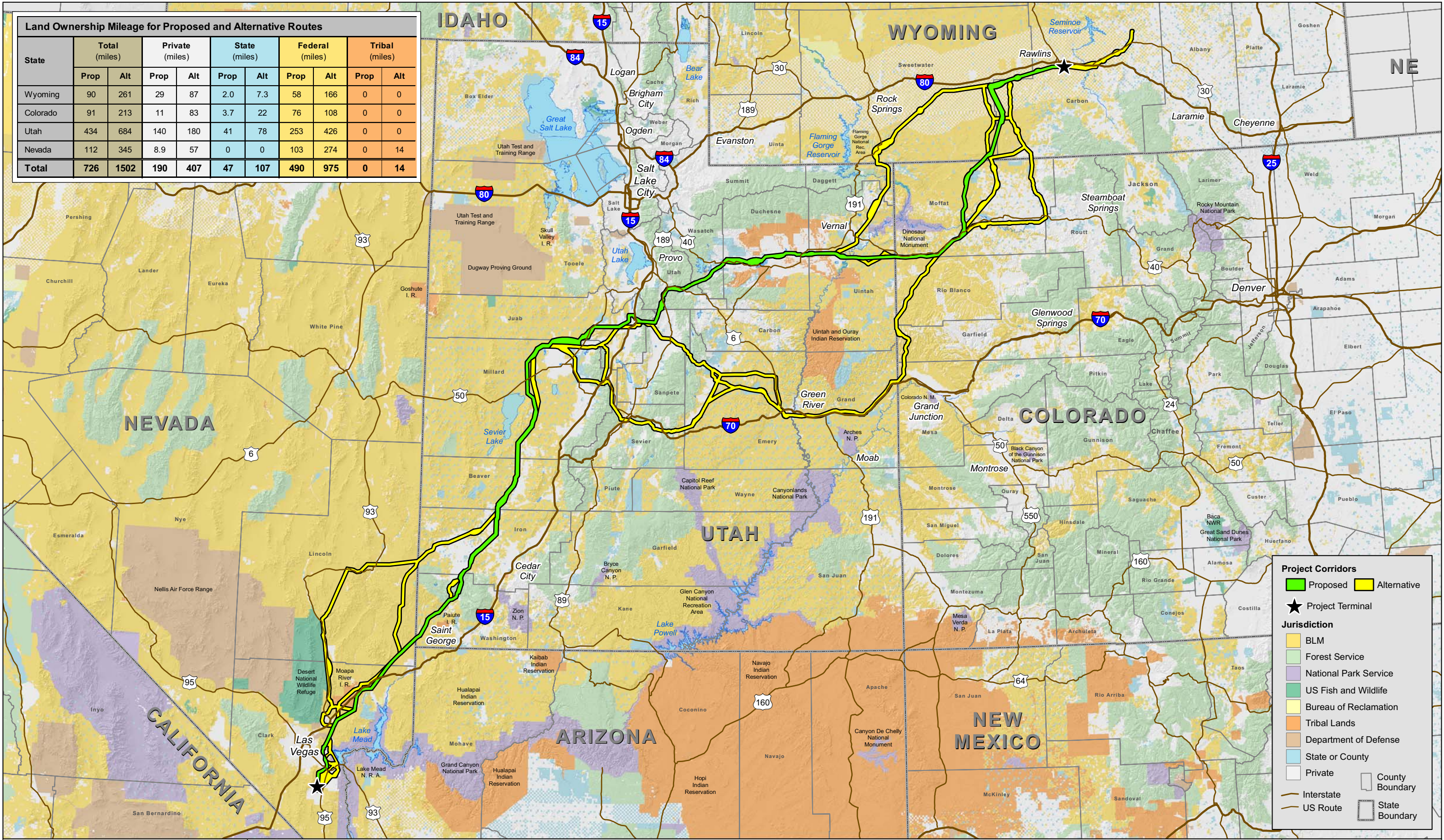


Land Ownership Mileage for Proposed and Alternative Routes										
State	Total (miles)		Private (miles)		State (miles)		Federal (miles)		Tribal (miles)	
	Prop	Alt	Prop	Alt	Prop	Alt	Prop	Alt	Prop	Alt
Wyoming	90	261	29	87	2.0	7.3	58	166	0	0
Colorado	91	213	11	83	3.7	22	76	108	0	0
Utah	434	684	140	180	41	78	253	426	0	0
Nevada	112	345	8.9	57	0	0	103	274	0	14
<b>Total</b>	<b>726</b>	<b>1502</b>	<b>190</b>	<b>407</b>	<b>47</b>	<b>107</b>	<b>490</b>	<b>975</b>	<b>0</b>	<b>14</b>



**Project Corridors**

- Proposed
- Alternative

★ Project Terminal

**Jurisdiction**

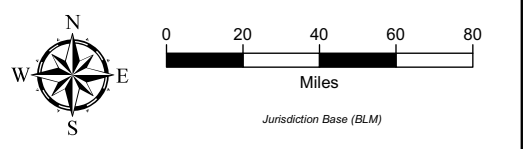
- BLM
- Forest Service
- National Park Service
- US Fish and Wildlife
- Bureau of Reclamation
- Tribal Lands
- Department of Defense
- State or County
- Private

— County Boundary

— State Boundary

— Interstate

— US Route



Proposed and Alternative Transmission Corridors (Q4 2011)  
 TransWest Express Transmission Project

