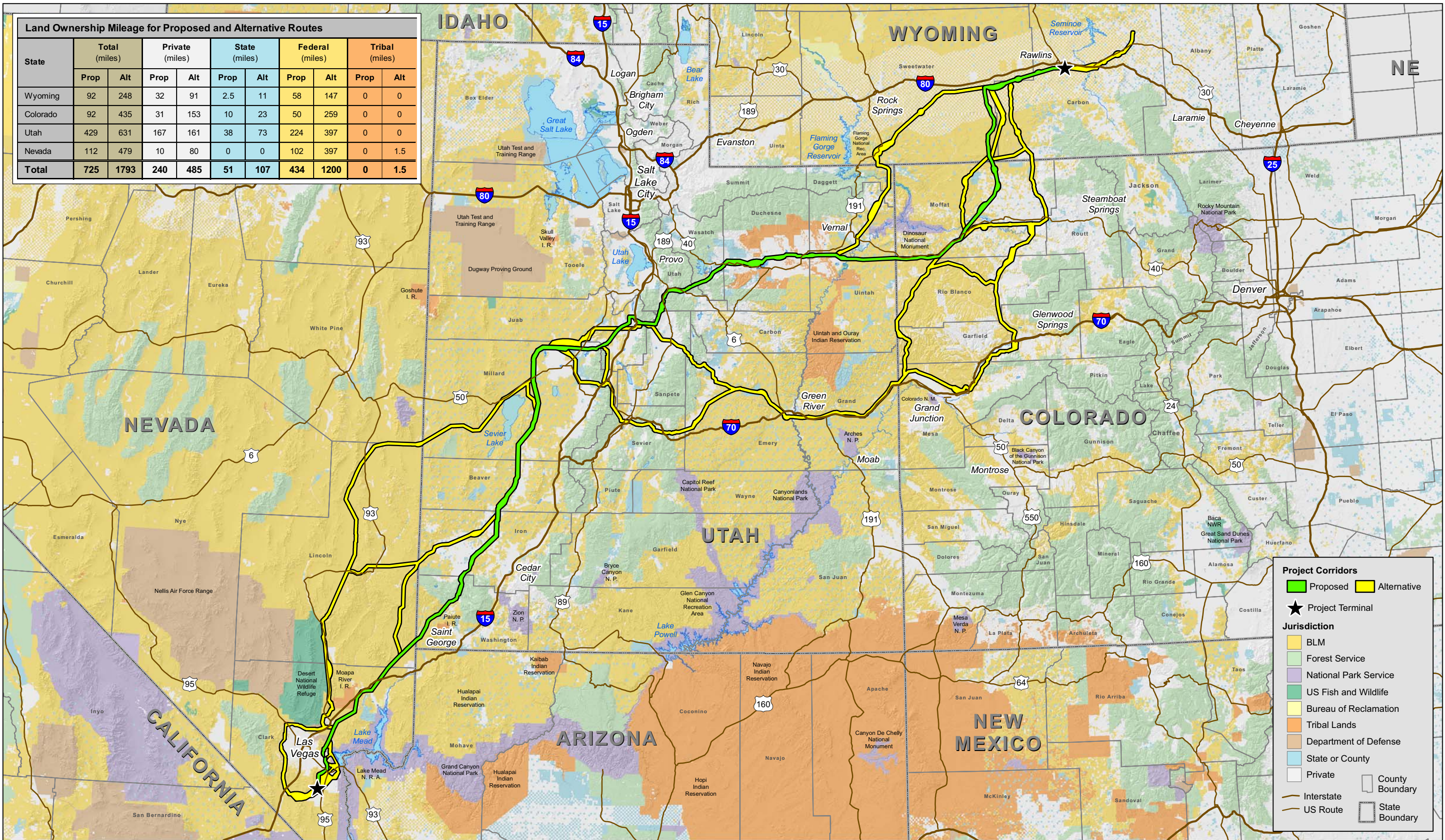


| Land Ownership Mileage for Proposed and Alternative Routes |               |             |                 |            |               |            |                 |             |                |            |
|--|---------------|-------------|-----------------|------------|---------------|------------|-----------------|-------------|----------------|------------|
| State  | Total (miles) |             | Private (miles) |            | State (miles) |            | Federal (miles) |             | Tribal (miles) |            |
|  | Prop          | Alt         | Prop            | Alt        | Prop          | Alt        | Prop            | Alt         | Prop           | Alt        |
| Wyoming  | 92            | 248         | 32              | 91         | 2.5           | 11         | 58              | 147         | 0              | 0          |
| Colorado   | 92            | 435         | 31              | 153        | 10            | 23         | 50              | 259         | 0              | 0          |
| Utah   | 429           | 631         | 167             | 161        | 38            | 73         | 224             | 397         | 0              | 0          |
| Nevada   | 112           | 479         | 10              | 80         | 0             | 0          | 102             | 397         | 0              | 1.5        |
| <b>Total</b>   | <b>725</b>    | <b>1793</b> | <b>240</b>      | <b>485</b> | <b>51</b>     | <b>107</b> | <b>434</b>      | <b>1200</b> | <b>0</b>       | <b>1.5</b> |



**Project Corridors**

- Proposed
- Alternative

**Project Terminal**

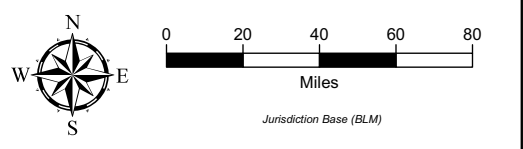
- ★

**Jurisdiction**

- BLM
- Forest Service
- National Park Service
- US Fish and Wildlife
- Bureau of Reclamation
- Tribal Lands
- Department of Defense
- State or County
- Private
- County Boundary
- State Boundary

**Interstate**

**US Route**



Proposed and Alternative Transmission Corridors (Public Scoping, Q1 2011)  
 TransWest Express Transmission Project

